



Howard Roark & Peter Keating
The Fountainhead

Design & Collaboration

Academy of Architecture Amsterdam

16 January 2019



Opmeer, Scheringamuseum



Amsterdam IJburg, blok 30



Opmeer, Scheringamuseum



Amsterdam IJburg, blok 30



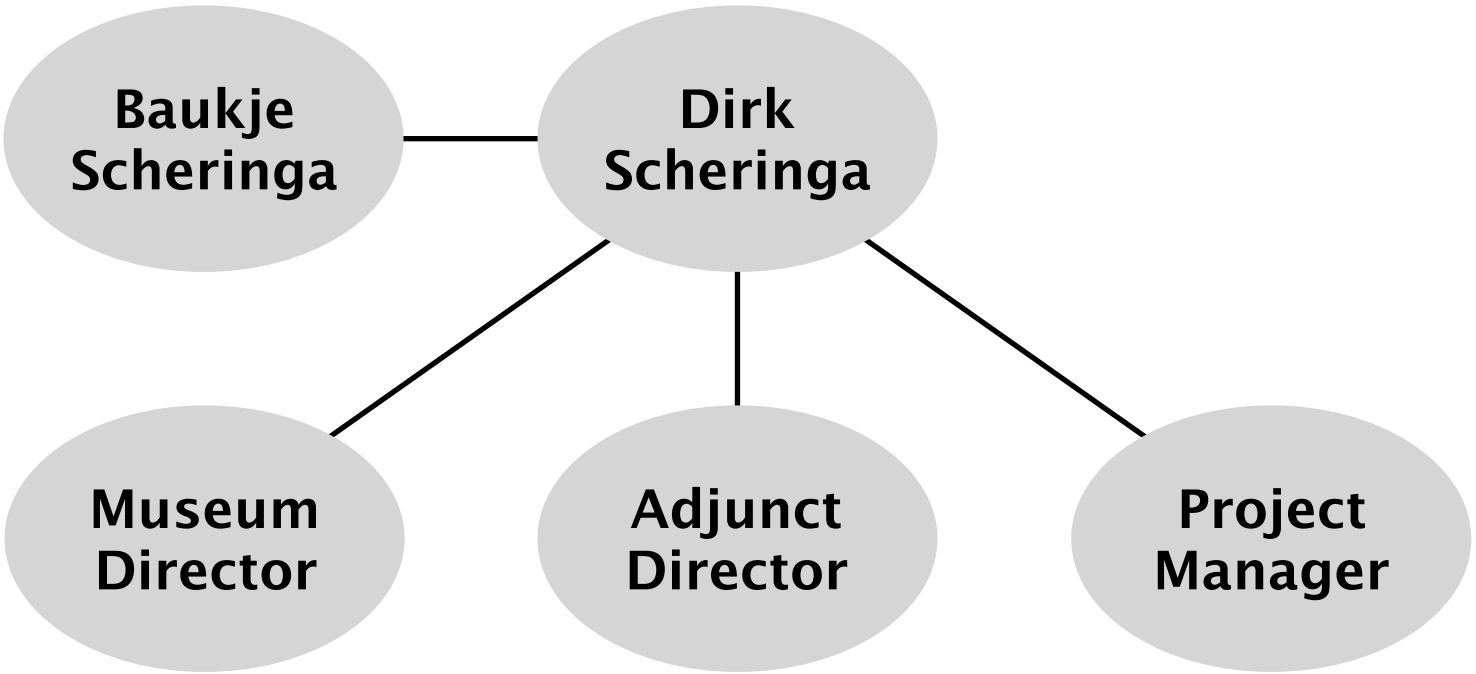
Waterstad 3



Ymere

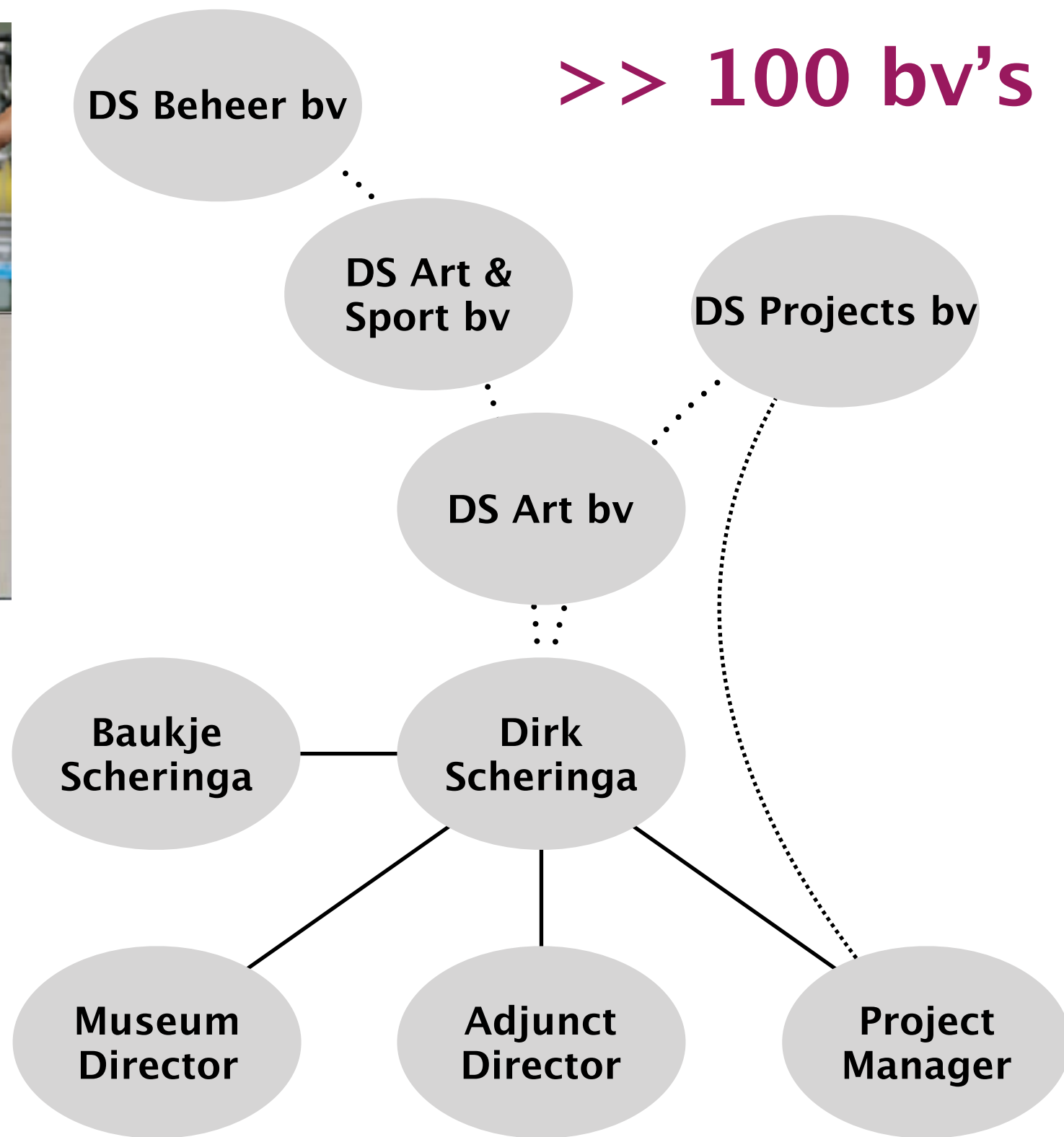


Opmeer, Scheringamuseum

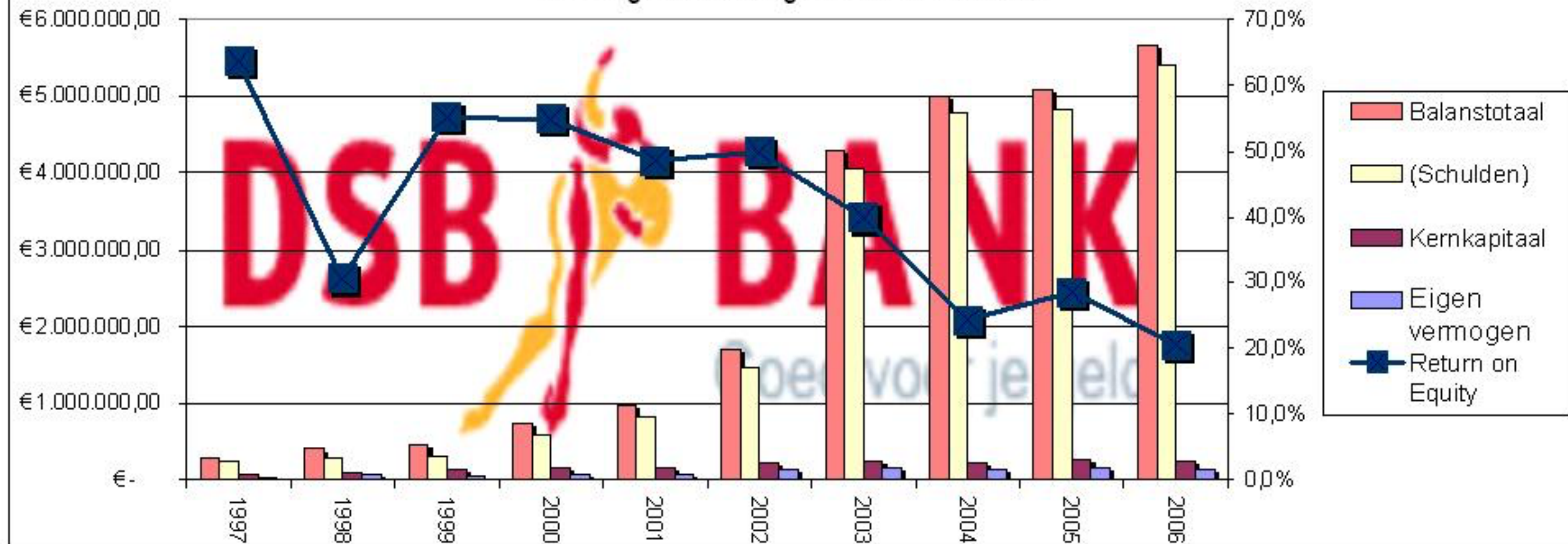




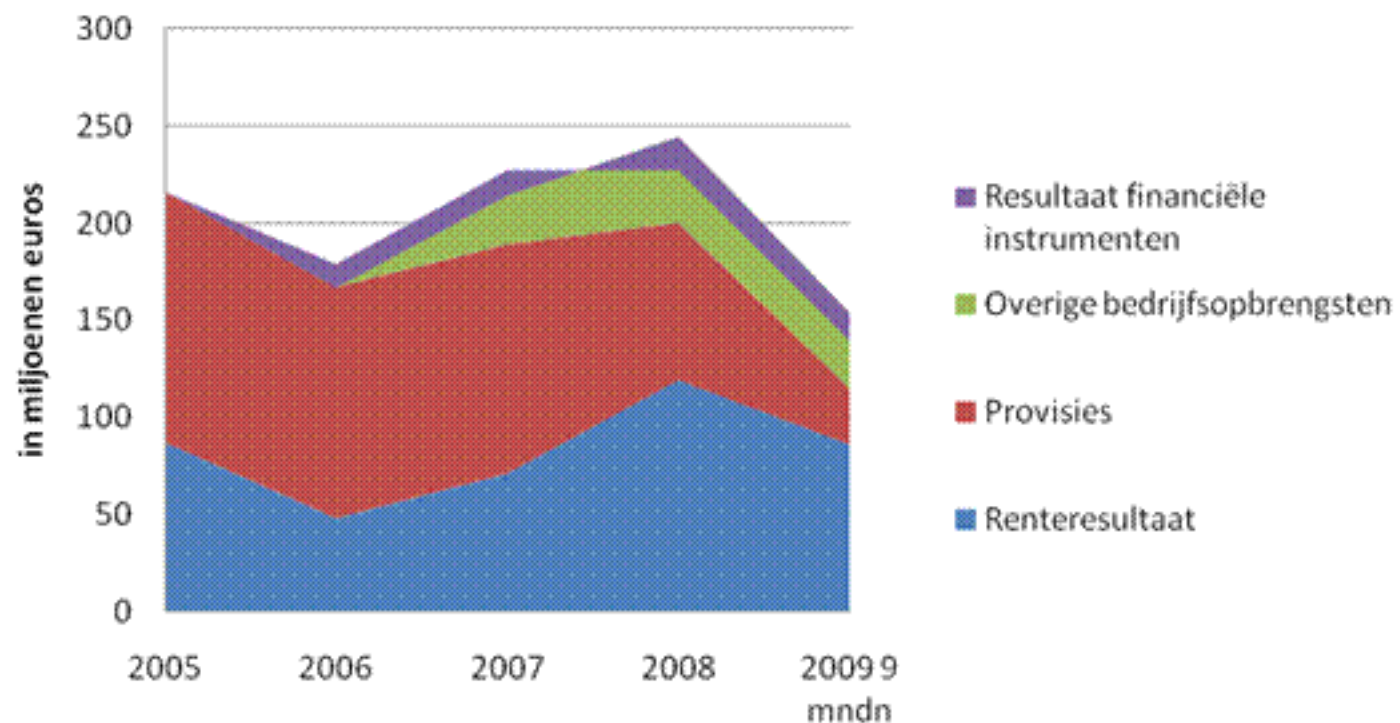
ART, SPORT ETC...



Vermogen en winstgevendheid van DSB



Het verdienmodel van de DSB







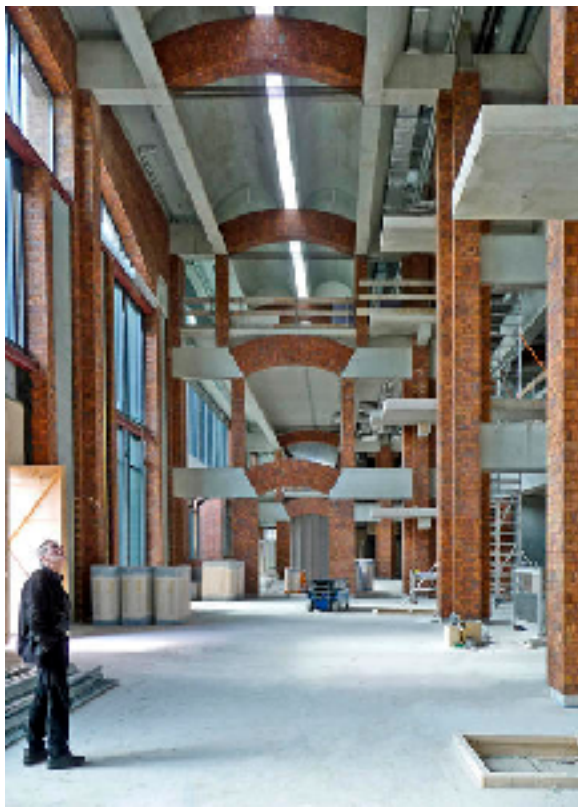
ART, SPORT ETC...



Project
Manager

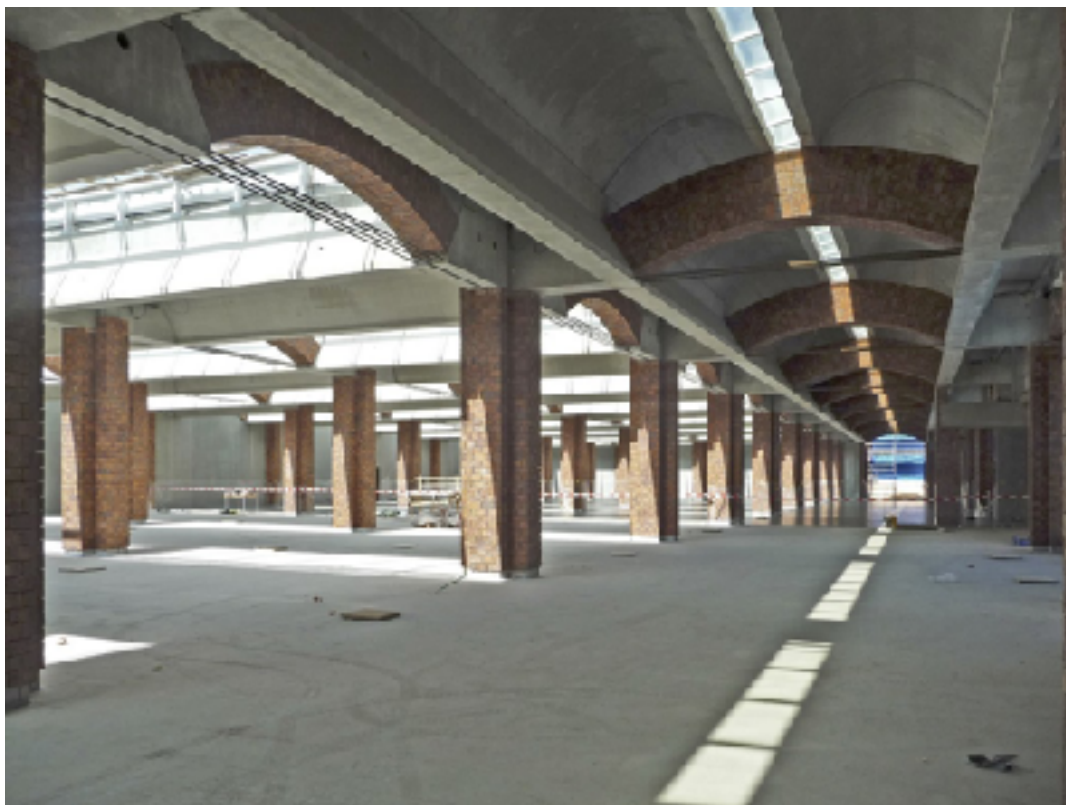
CURATOREN

SIMPEL > COMPLEX



Opmeer Scheringmuseum

**90% FINISHED
STILL FOR SALE...**





Opmeer, Scheringamuseum



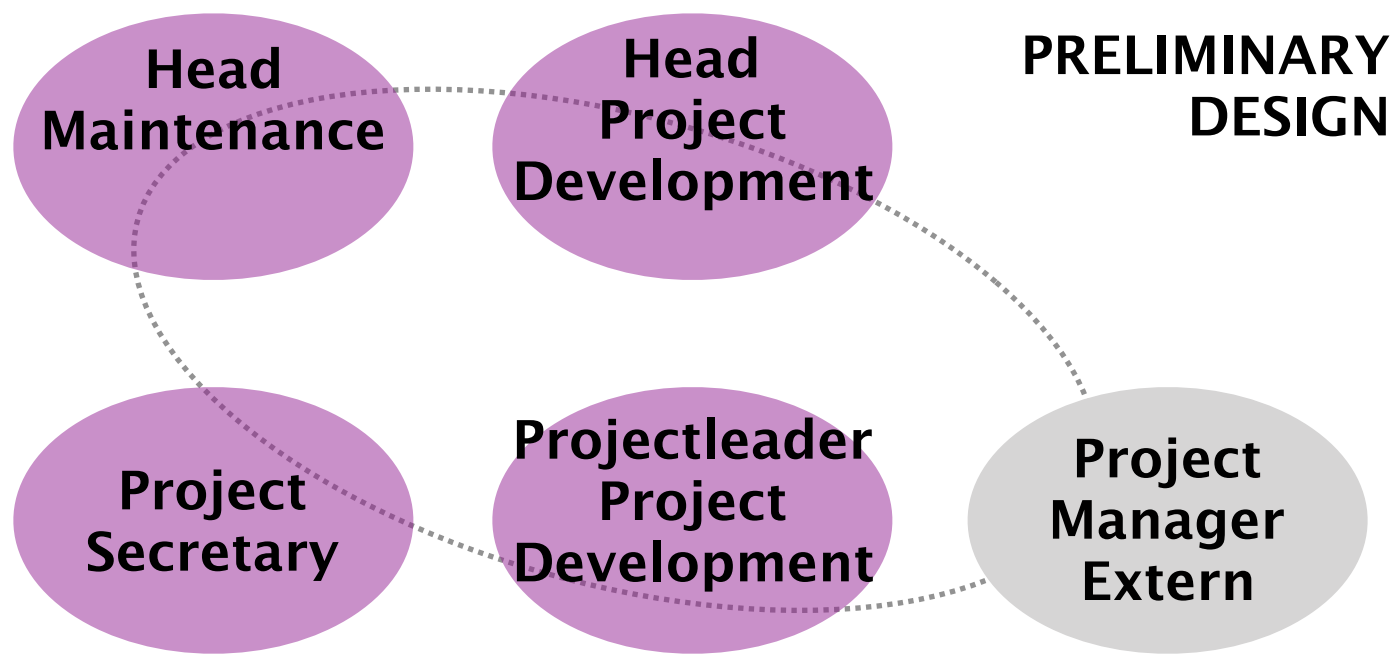
Amsterdam IJburg, blok 30



Waterstad 3

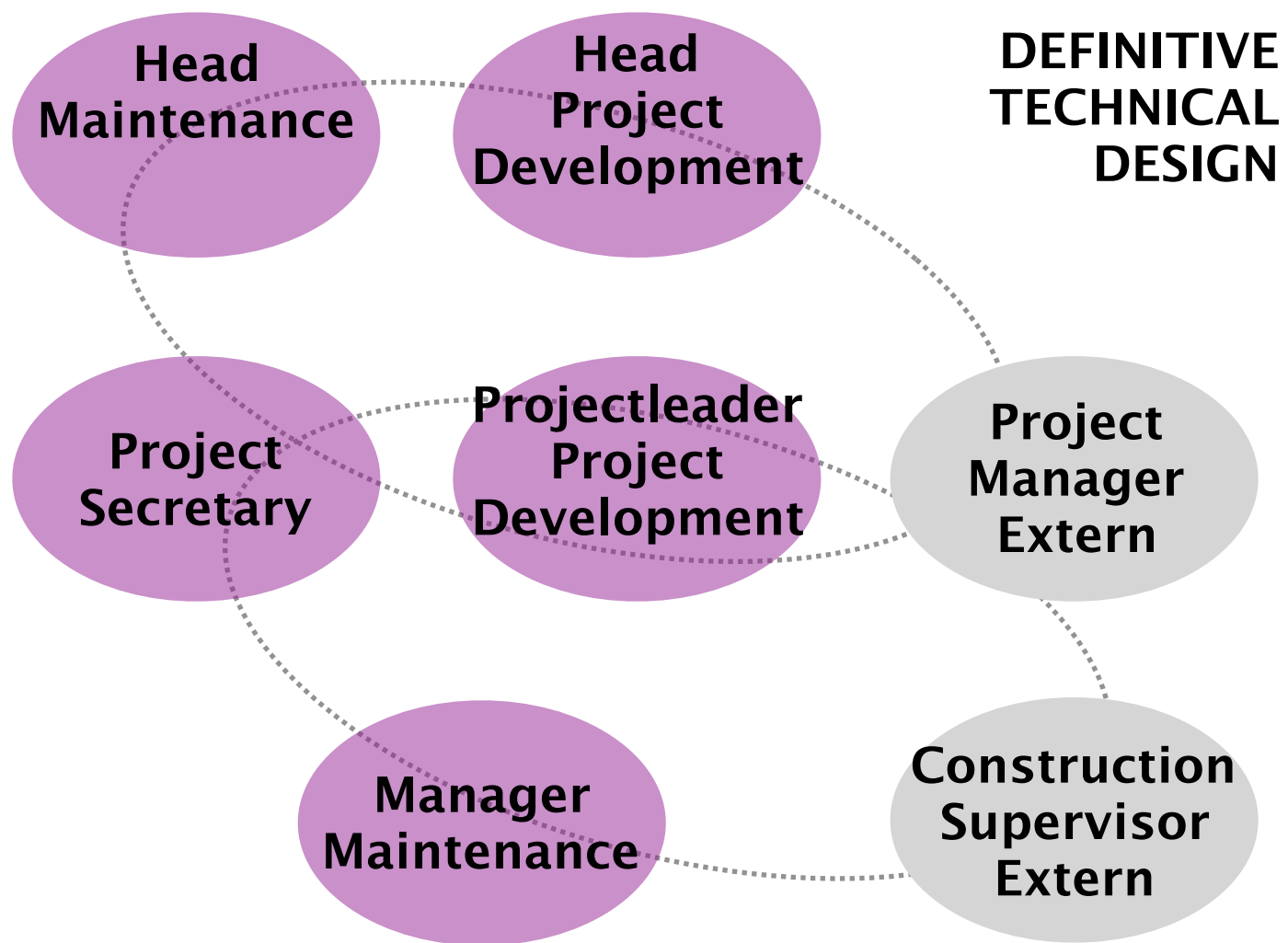


Ymere



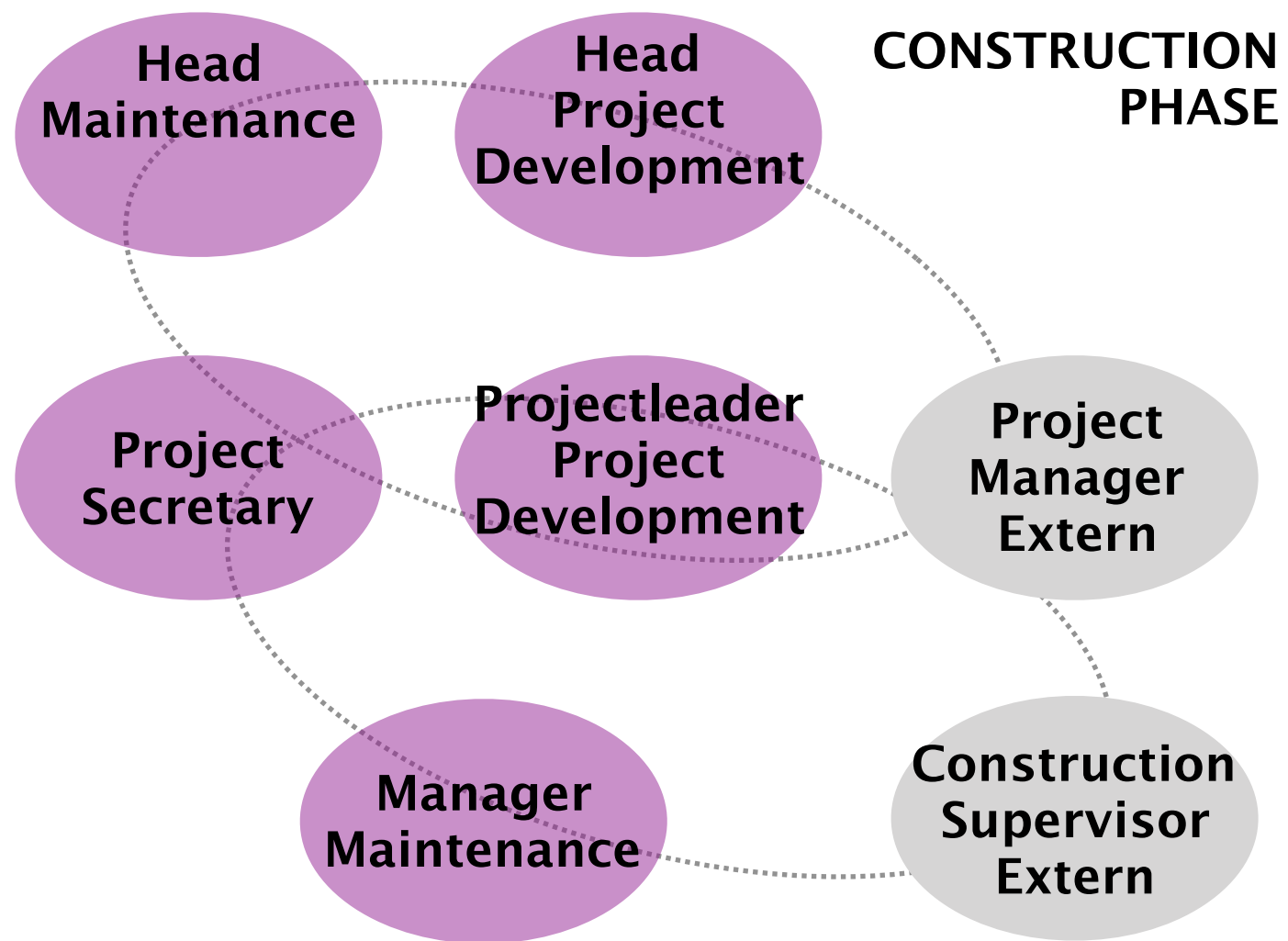
Amsterdam IJburg, blok 30

Ymere



Amsterdam IJburg, blok 30

Ymere



Amsterdam IJburg, blok 30

Ymere



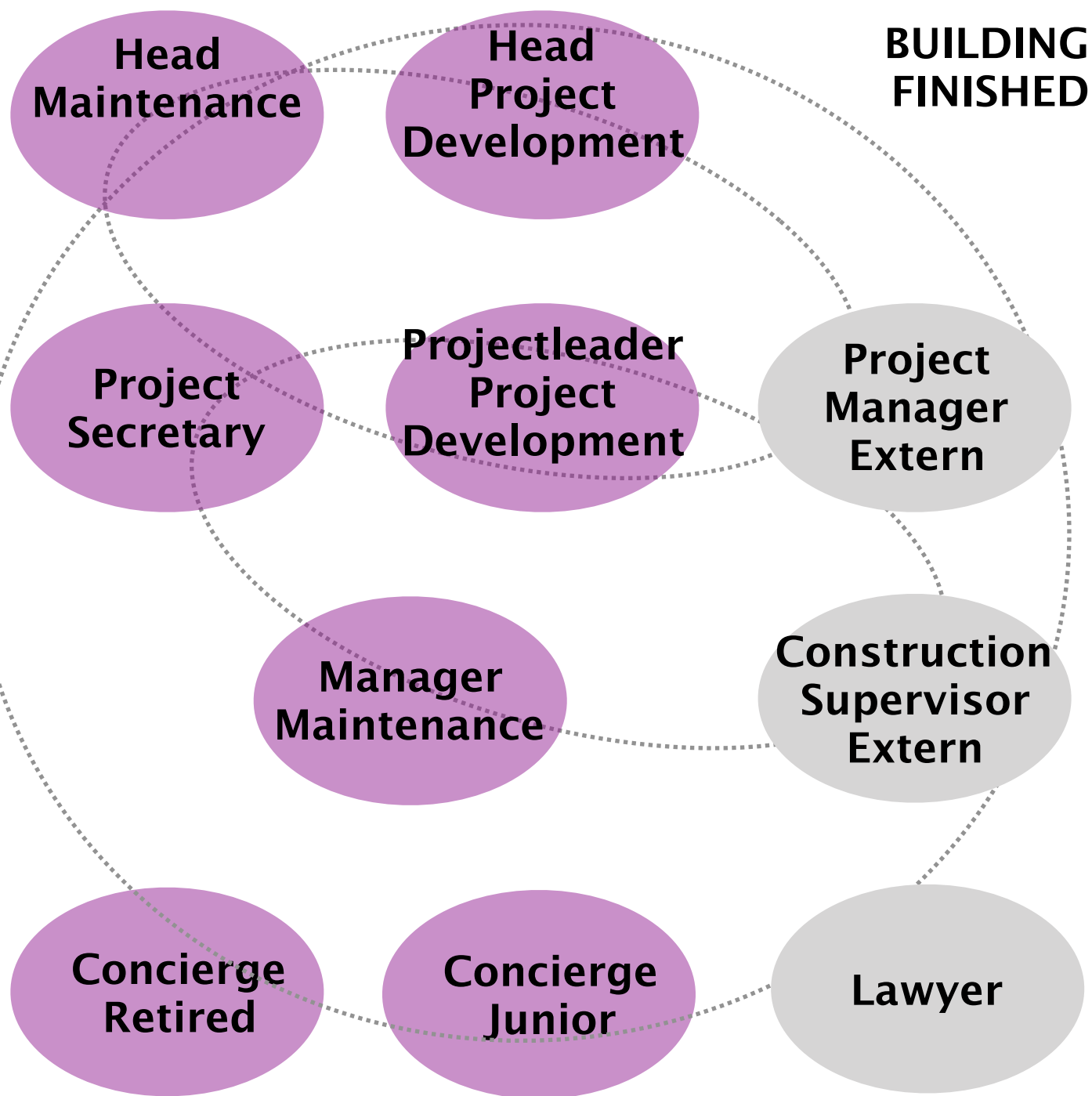


Ymere





Ymere

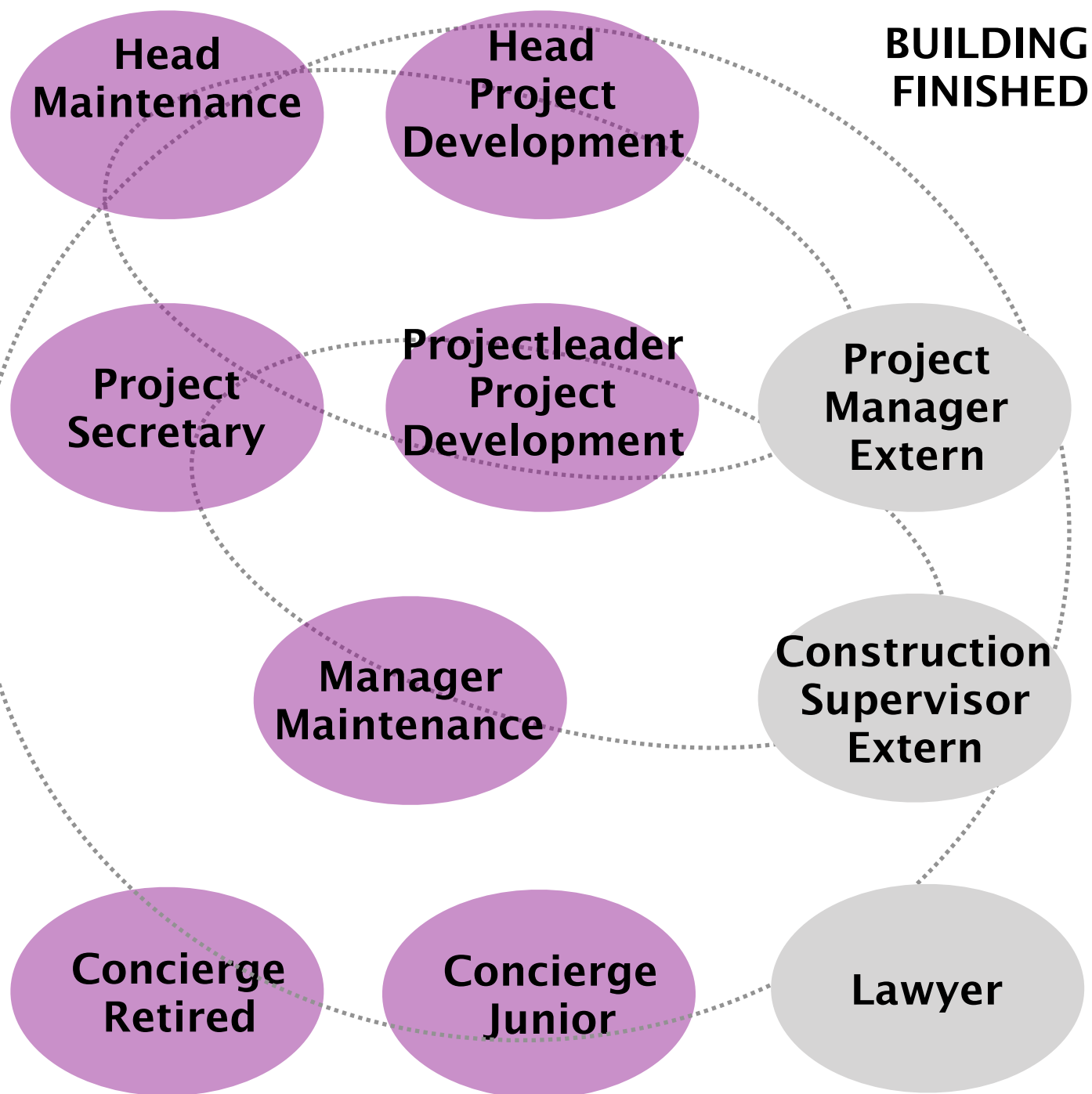


Amsterdam IJburg, blok 30

Ymere

MEETING!
What did they asked the architect?

The budget for projectmanagement is out of control. Can you design a new entrance, ... for free?



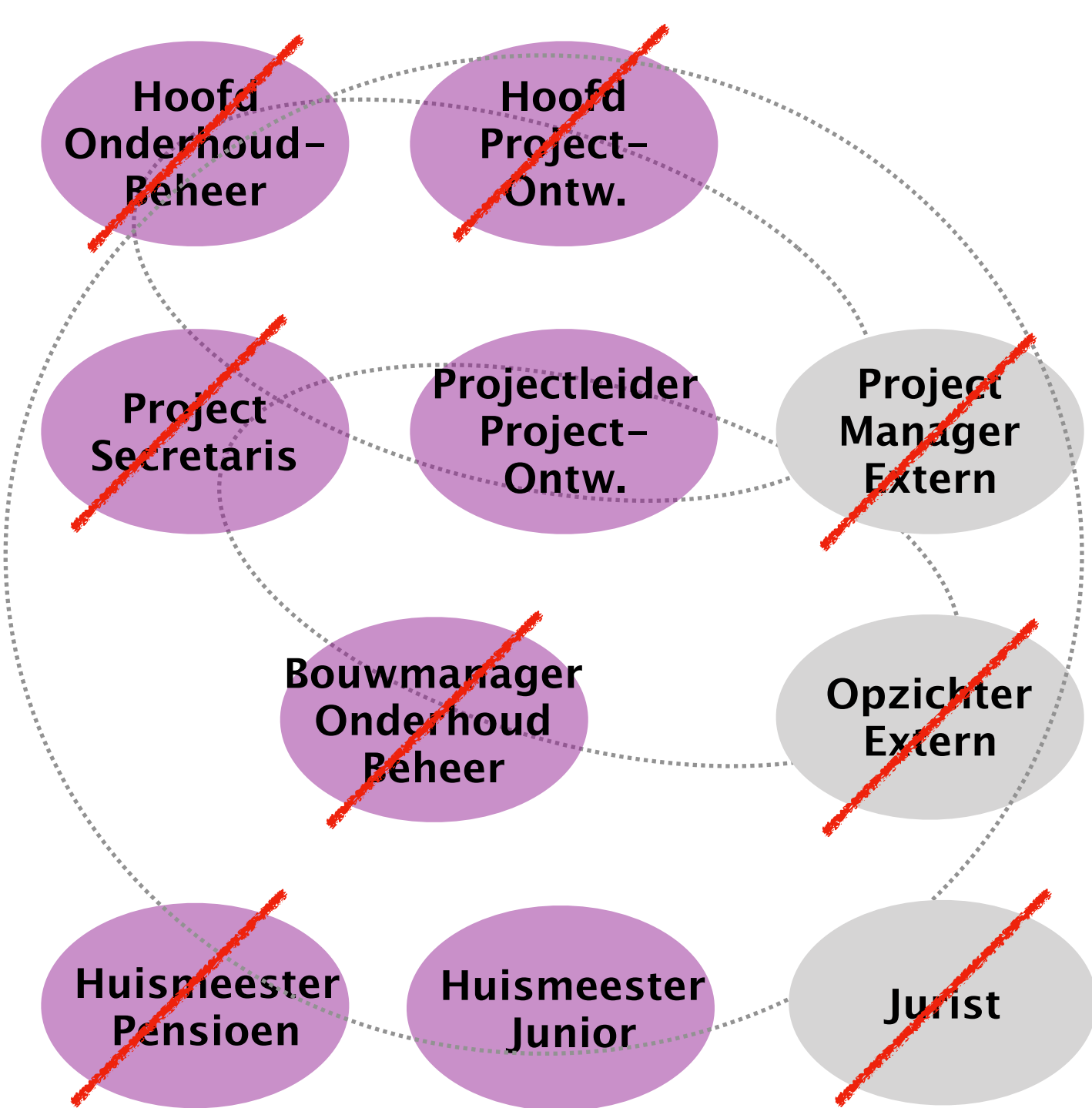
Amsterdam IJburg, blok 30

Ymere

WHAT WOULD YOU DO?

MEETING!
What did they asked the architect?

The budget for projectmanagement is out of control. Can you design a new entrance, ... for free?



Amsterdam IJburg, blok 30

Ymere

WHAT I DID...

Maximum 2 people for the client in a meeting.

Planning = 1 week.

Fee for travel, meetings and prints.

Trainee as projectmanager.

COMPLEX > SIMPEL



Opmeer, Scheringamuseum



Amsterdam IJburg, blok 30



Waterstad 3



Ymere